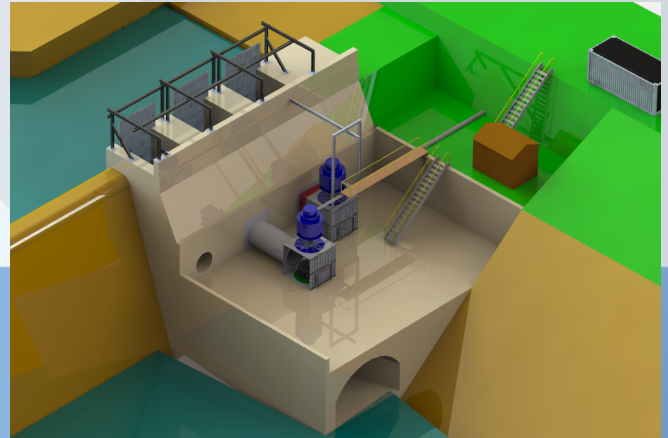




h-Modulor[™]

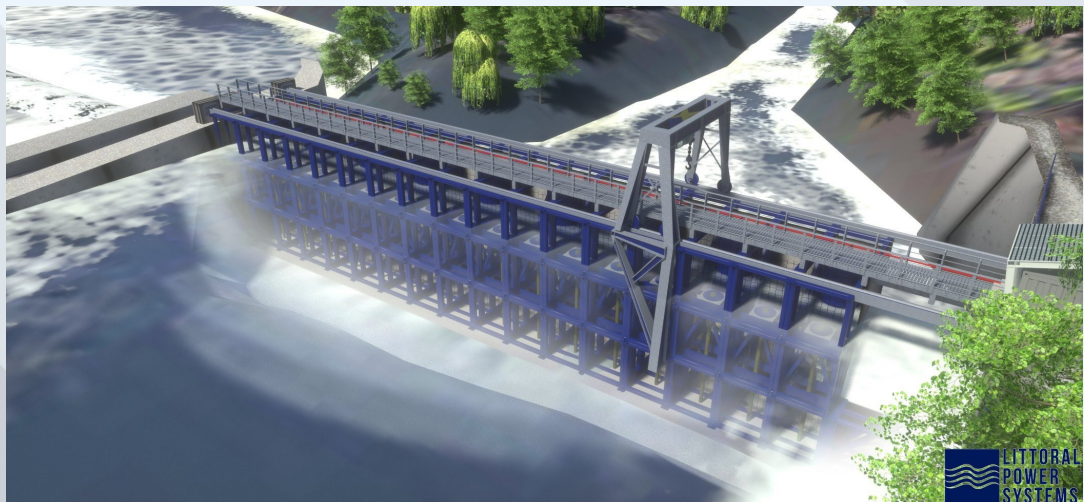


h-Modulor stacks are a better way to build or upgrade hydropower, delivering safe, low cost development from 0.5-25 MW.

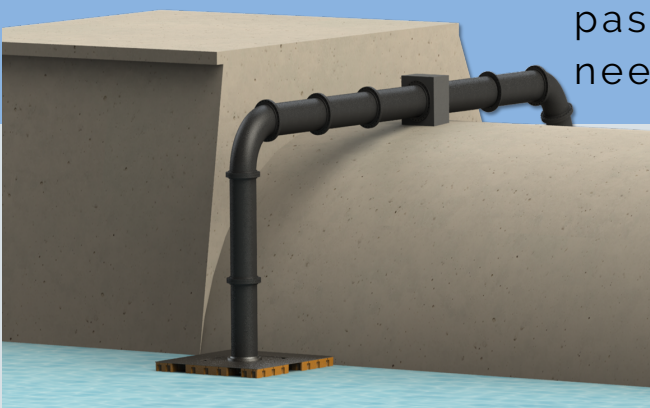


Pressure Box
1180

Module Stack
1110



Siphon
1190



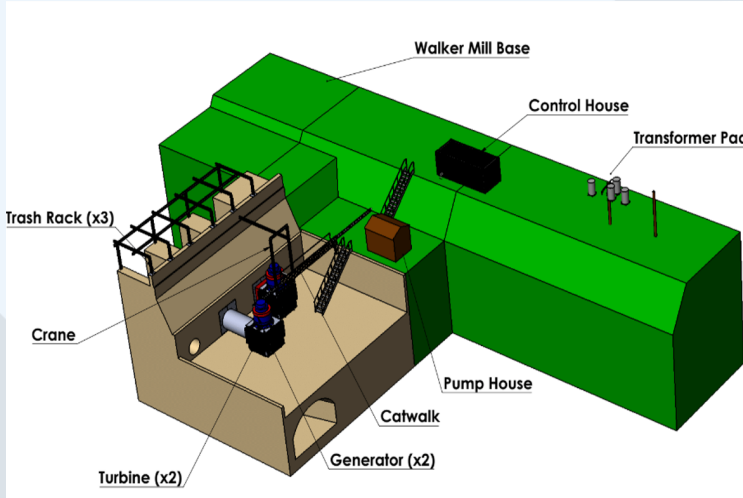
Each module configuration can be selected, configured, and arranged to achieve the power generation, sediment passage, fish passage, or recreation needs of the site.



1. Select a Configuration:

Pressure Box

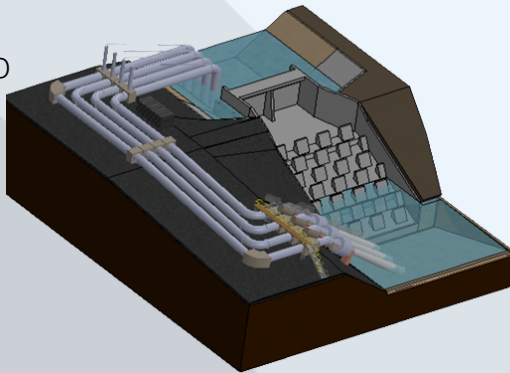
Pressure boxes drop into existing sites or connect to penstocks for fast installation.



Walker Mill Dam Pressure Box Configuration

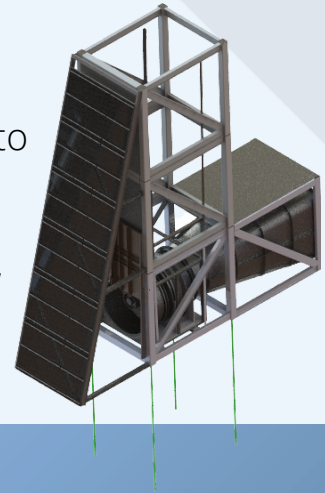
Siphon

Syphons drop into existing dams to add power generation and improve water quality.



Module Stack

Module Stacks are selected and arranged to add power generation, fish passage, and other functions for 0.5-20 MW sites



2. Size and Specify the Modules:

Module Type	0-125	126-250	251-500	501-1000	1001-5000
Pressure Box	A	B	B	(2)B	2=B
Siphon	24"	40"	60"	Multiple 60"	
Module Stack	Hm small	Hm Small	Hm	Hm	Multiple Hm

Stack height varies by project head

3. Install the equipment at the site.

Start here:

littoralpower.com

doc. # 1100.01 © Littoral Power Systems 2022

